

An underwater scene with clear blue water, sunlight filtering through the surface creating shimmering patterns on the sandy bottom. Several small fish are visible swimming near the seabed.

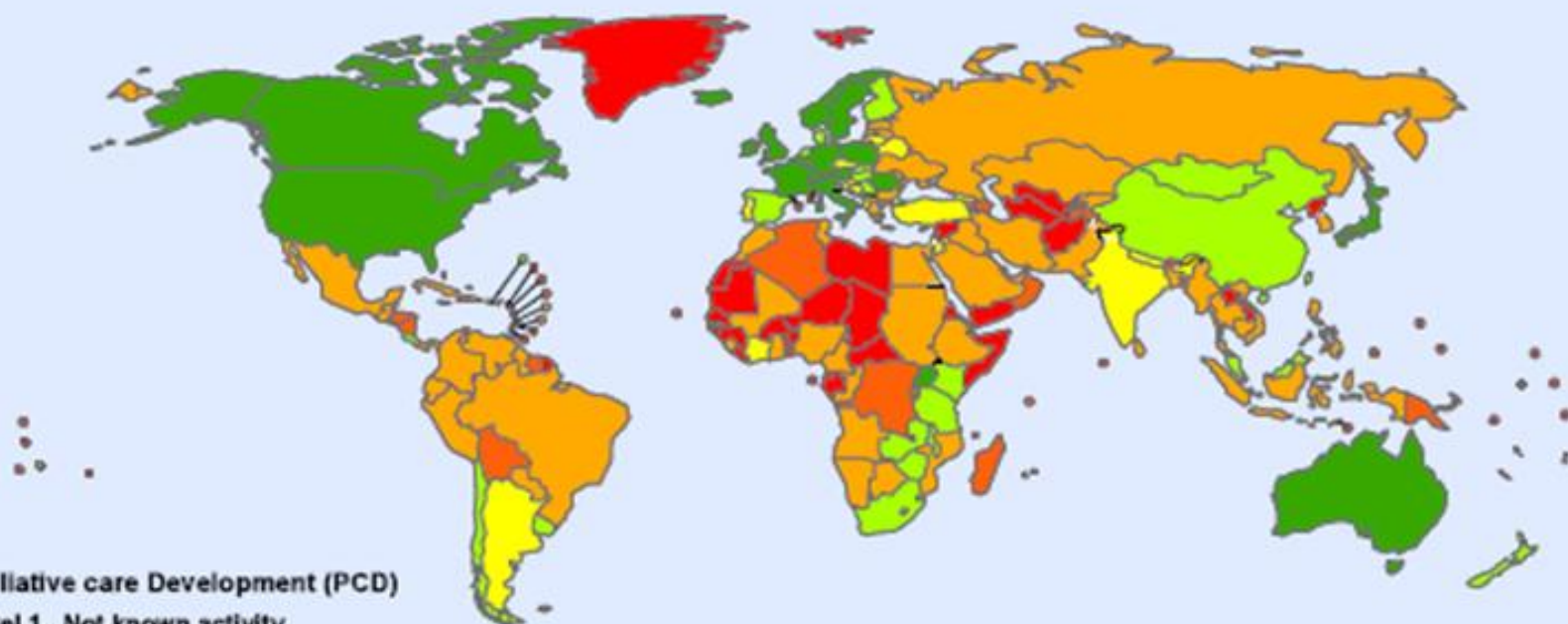
Palliative Care in BANGLADESH

Dr. Rubayat Rahman

Incurably ill patients !



WPCA Palliative Care Development All levels (n = 234)



Level of Palliative care Development (PCD)

- Level 1. Not known activity
- Level 2. Capacity building
- Level 3a. Isolated provision
- Level 3b. Generalized provision
- Level 4a Preliminary integration
- Level 4b Advanced integration
- Data not available

Boundaries and names shown and the designations used on this map do not imply the expression of any opinion whatsoever on the part of the WPCA concerning the legal status of any country, territory, city or area or of its authorities, or concerning the delimitation of its frontiers or boundaries. Dotted lines on maps represent approximate border lines for which there may not yet be full agreement.

21 January 2011 : Opening ceremony of Centre for palliative care by the honorable **PRESIDENT** of Bangladesh



Palliative care in BSMMU (2007 October)

Service

Awareness
building &
Advocacy

Education &
training

Research

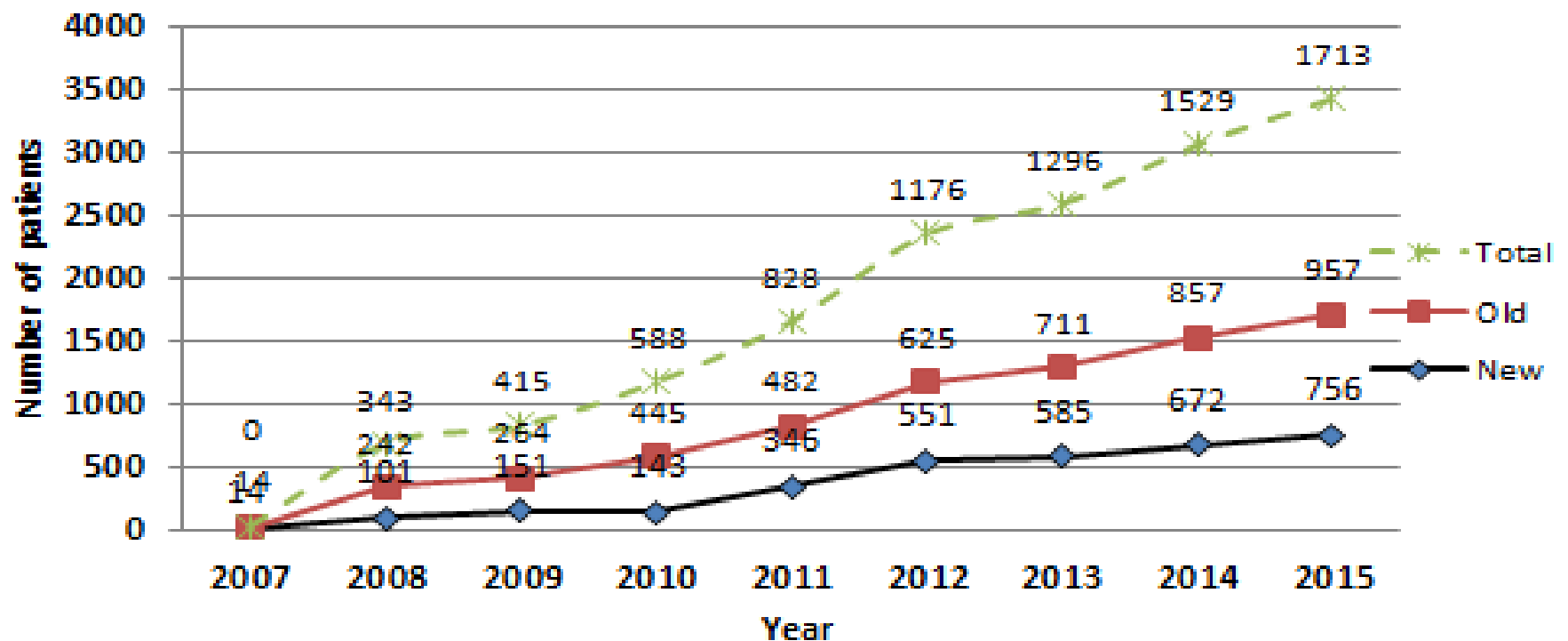
Administration
& Finance

Centre for palliative care and its commitments :

- **Out door patient management**
- **In door patient management**
- **Day care management**
- **24 hours telephone consultation**
- **Lyphoedema care**
- **Home care**
- **Bereavement care and rehabilitation**

Out door Patients

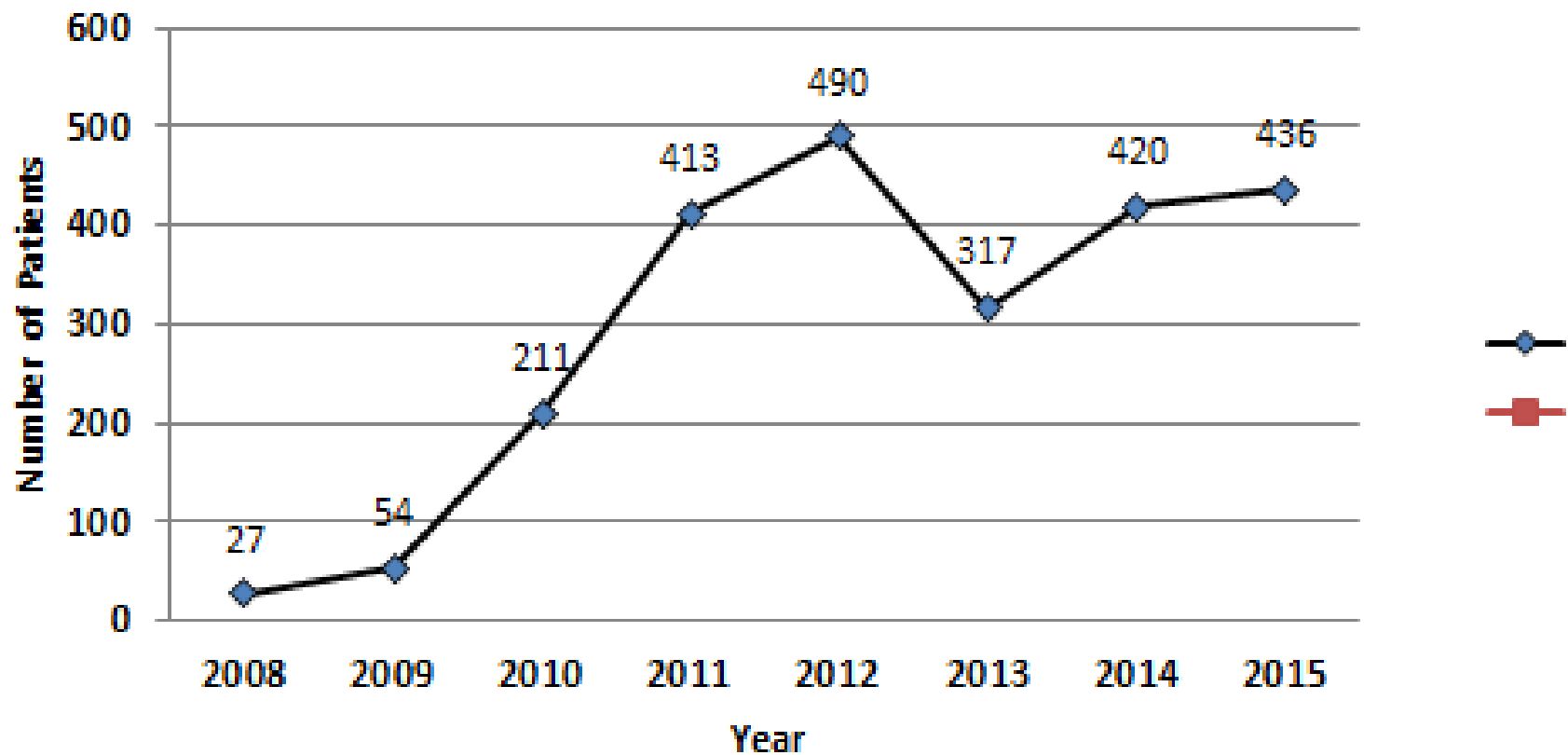
Year	2007	2008	2009	2010	2011	2012	2013	2014	2015
New	14	101	151	143	346	551	585	672	756
Old	0	242	264	445	482	625	711	857	957
Total	14	343	415	588	828	1176	1296	1529	1713



Year wise number of patients attending the out patient clinic of palliative care

Indoor Patient

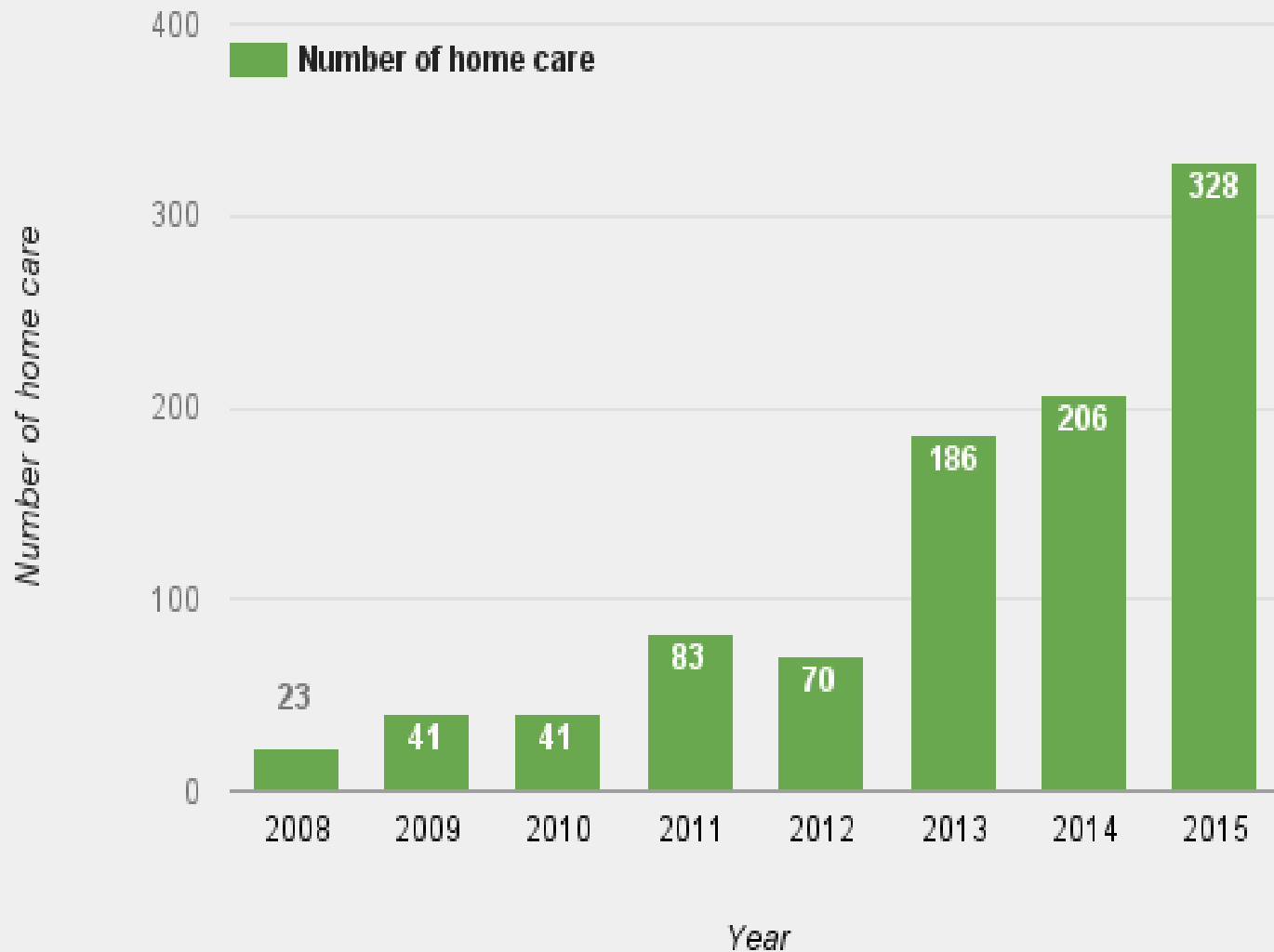
Year	2008	2009	2010	2011	2012	2013	2014	2015
	27	54	211	413	490	317	420	436



Year wise number of patients admitted in the palliative care ward.

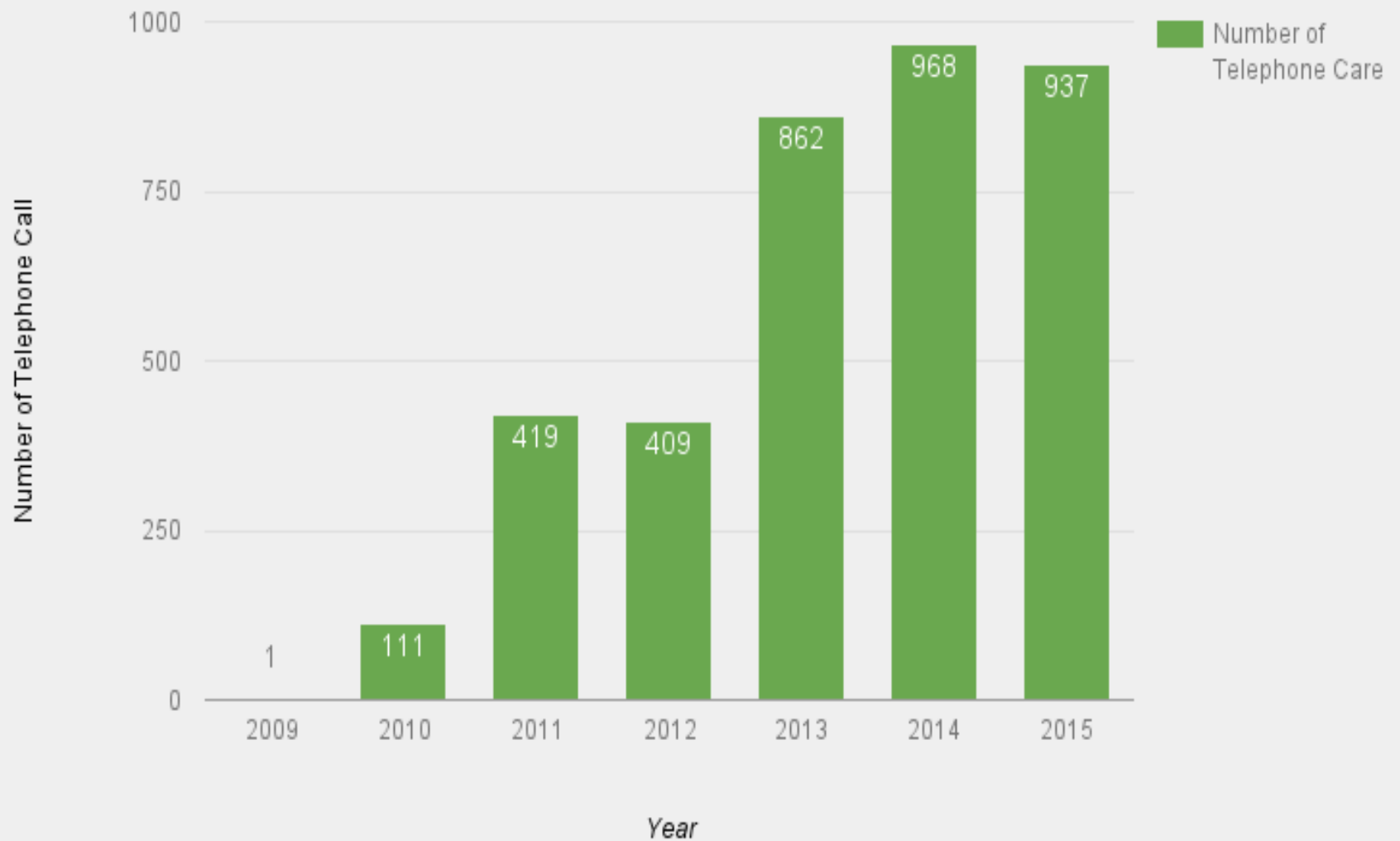


Home Based Palliative Care.





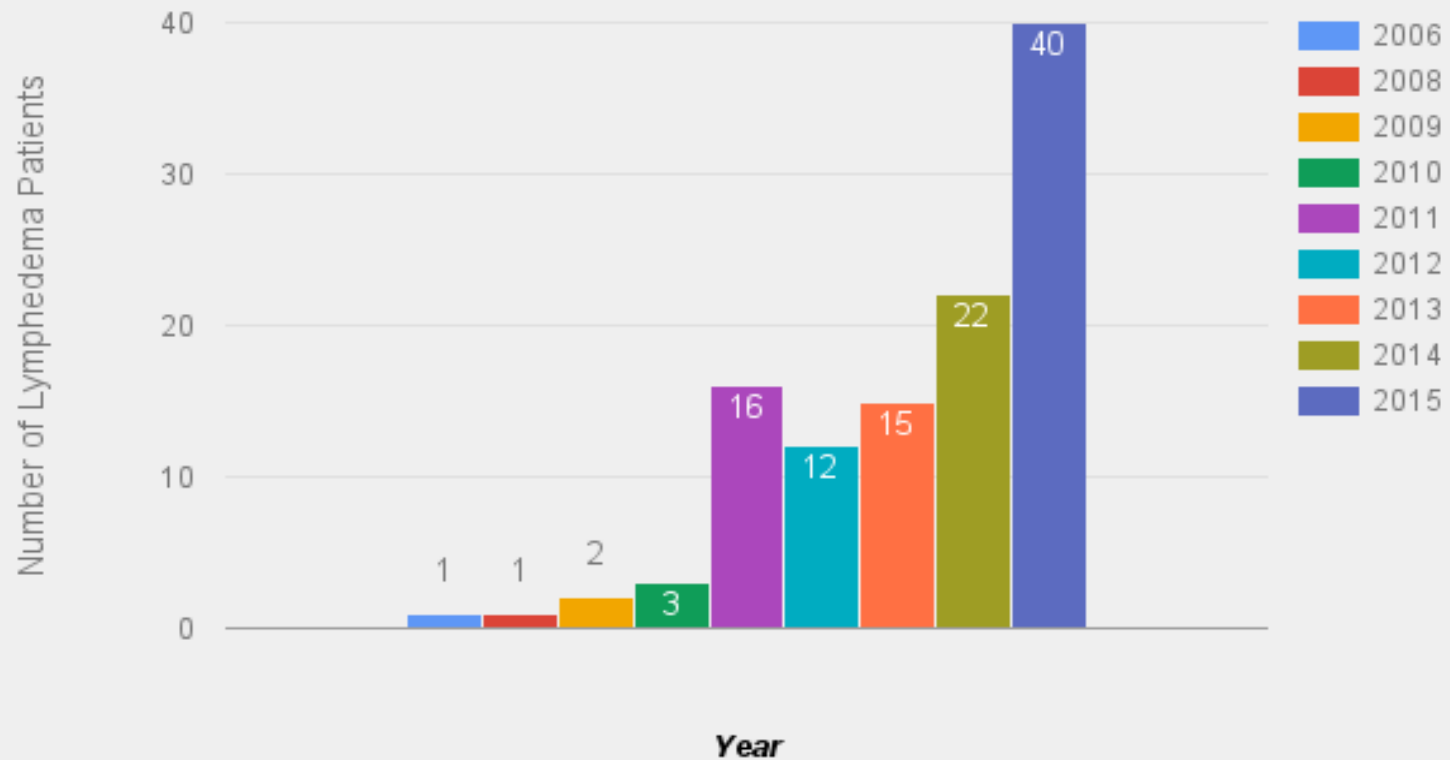
Telephone Care.





Lymphedema Care:

Lymphedema Care.



Lymphedema Clinic



An award grant by UGC for CPC

- **Capacity building.**
- **Resource center development**
- **MD curriculum development**

Courses in Palliative Care

Course Name	No of Courses	Total Participant
Basis Certificate course in Palliative Medicine (BCCPM)	13	92
Basis Certificate course in Palliative Nurse (BCCPN)	9	58
Foundation Course in Palliative Care for Doctors	26	303
Introductory Course in Palliative Care for Doctor & Nurse	19	327
Introductory course in Palliative Care for Community Volunteers	18	276
Introductory Course in Palliative Care for Patient Relatives	1	11
Introductory Course in Palliative Care	3	46

Academic journey begins

- Developed and Submitted for approval in March 2014
- MD curricula approved by the 57th meeting of the syndicate on 06.06.2015
- Palliative Medicine enters in to post graduate program becomes a specialty

Basics of the curriculum

- **5 year residency program in two phases**
- **Phase A : 2 years with 12 weeks in palliative medicine basics followed by block rotation in different medicine faculties.**
- **Phase B : 3 years in palliative Medicine**

National Workshop: Spiritual Dimension of Health Care



A qualitative analysis after interviewing 701 persons

Assessment of Palliative Care in Bangladesh



National Institute of Population Research and Training (NIPORT)

Conducted by:
Centre for Palliative Care (CPC)
Bangabandhu Sheikh Mujib Medical University (BSMMU)
August 2014

- 225 pts.
- 259 family caregivers
- 63 physicians
- 64 nurses
- 32 program managers
- 20 policy opinion leaders
- 38 health administrators

TOT program by Lien Collaborative (APHN)

- 4 courses :

July 2013, August 2014

September 2015, March 2016

35 participants
with 23 doctors,
2 pharmacists &
10 nurses

Community based approach of BSMMU

**‘Improving the quality of life of older
people in the urban slums of
Bangladesh’**

**A joint program of Worldwide Hospice
Palliative Care Alliances (WHPCA) &
Centre for Palliative Care(CPC) Bangabandhu
Sheikh Mujib Medical University, (BSMMU)**

Slum project : WHPCA & CPC







MORPHINE the golden drug

INCB allocation for Bangladesh

- 350 kg Pethidine
- 100 kg Morphine sulfate
- Fentanyl : 200g.

Utilization in Bangladesh

- Pethidine utilized : 100 Kg
- Morphine 20 KG

Morphine tabs first produced in 2005 - 2006

3 Kg Morphine used to manufacture

-1,98,530 tabs

2006-2007 :

-1450 consumed

2007-2008:

-18,000 (a ten fold
increase.)

- Myths and misconception
- Strict Narcotic regulation
- Inadequate knowledge to prescribe morphine

- **University CPC raised CPC Quota 10,000 to 50,000 to 100,000 tablets.**
- **12 retail drug store in Dhaka**
 - **24 retail outlets throughout the country (under implementation)**

Manufacturer	Formulation of Morphine	Cost (USD)
Gono shasthaya	Injection (15mg/1ml)	\$0.51/ampoule
	SR tablet (15mg)	\$0.18/tablet
Unimed & Unihealth	Injection (15mg/1ml)	\$0.51/ampoule
	SR tablet (15mg)	\$0.18/tablet
	IR tablet (10mg)	\$0.12/tablet
	Oral solution (5mg/5ml, 100 ml bottle)	\$1.03/bottle

A long way to go !

